

## System Overview

### ➤ Main Functions

- Shows live trading information for all companies at the same time.
- Market depth: best 5 buy and sell orders.
- Executed orders: all orders for all companies.
- Graph that shows changes in stock price during current trading day.
- Blocked trades: all blocked trades for all companies.
- Summary of the market performance: index value, trading value, trading volume, trading variation, gainers count, losers count and number of traded stock.
- Graph that shows changes in index value.
- Best 10 increasing companies according to stock price.
- Graph that shows Best 10 increasing companies according to stock price and the whole market.
- Best 10 increasing companies according to trading volume.
- Graph that shows Best 10 increasing companies according to trading volume and the whole market.
- Best 10 increasing companies according to trading value.
- Graph that shows Best 10 increasing companies according to trading value and the whole market.
- Show most 10 decreasing companies according to volume.
- Show most 10 decreasing companies according to stock price.

- Disclosures, circulars, board of directors and major shareholders for all companies.
- Basic information and financial information for all companies.
- Pivot point, resistance point 1, resistance point 2, support point 1 and support point 2 for all companies.
- Show all previous trading days for all companies and summary of historical data based on a specified date by the user.
- Show all previous trading days for all companies and summary of historical data based on a specified date by the user.
- Show companies with ask but no bid.
- Show companies with bid but no ask.
- Show the portfolio for user's accounts.
- Graph that shows the market value percentage for each stock in the portfolio.
- Buy and sell orders.
- Allow order cancelling and replacing.
- Show all orders for all accounts belong to the user in a user friendly way.
- Show all orders for all accounts belong to the user in a user friendly way.

## ➤ **Basic Features**

- Export any of market data to MS-Excel.
- Highly Secured through using cryptography for sending and transferring information.
- High performance updating market information and responding to user request.
- Platform independent.
- Easy access and easy finding required information through filtering tools.
- User friendly through giving the user the ability to make as many profiles as he/she needs and save these profiles.
- Enable the user to manage system alerts for all market data, these alerts are fired through e-mail and SMS.

- Visual effects for updates notifications.
- Enable the user to configure the interface and choose one of the multiple themes available.
- Multi language (Arabic and English)
- Trading ticker for all companies.
- Show last intraday time.
- Multi desktop panes.
- Chatting room for market discussions.
- Multi-account portfolio.
- Easy finding and manipulating orders through the efficient and friendly searching tools.
- High efficiency and high performance in sending orders request and receiving responses for sent requests.

## Market Watch

### *Multi Tabs Market Watch*

Un-limited number of tabs can be generated; each tab can include a collection of companies with selected fields determined by the user.

Those fields are: company full name, symbol, code, suspension flag, last price, close price, minimum price, maximum price, TOP, open price, highest price, lowest price, average price, bid quantity, bid price, ask quantity, ask price, variation, variation percentage, volume and value.




The Arab Financial Investment Co.  
الشركة العربية للاستثمارات المالية

Market Watch										
Whole Market (340)			My Stocks (9)			Other Stocks (24)				
Symbol	Last	Close	Minimum	Maximum	Open	Low	High	Average	Bid Qty.	Bid
FUTR	0.63	0.60	0.57	0.63	0.59	0.59	0.63	0.61	200	0.61
AIFE	2.32	2.21	2.10	2.32	2.32	2.32	2.32	2.32	1,860	2.32
AGICC	3.39	3.23	3.07	3.39	3.28	3.27	3.39	3.35	1,250	3.39
PRES	16.53	15.75	14.97	16.53	16.48	16.00	16.53	16.28	5,480	16.53
ARAI	2.13	2.03	1.93	2.13	2.11	2.10	2.13	2.12	1,944	2.13
FRST	0.44	0.42	0.40	0.44	0.42	0.42	0.44	0.44	1,007,242	0.44
JEDI	0.88	0.84	0.80	0.88	0.85	0.85	0.88	0.88	1,218	0.88
JITC	3.55	3.39	3.22	3.55	3.39	3.39	3.55	3.42	100	3.25
JOPI	1.11	1.06	1.01	1.11	1.09	1.04	1.11	1.08	500	1.08
JOGB	2.05	1.96	1.87	2.05	1.95	1.95	2.05	2.04	200	1.98
SABK	0.69	0.66	0.63	0.69	0.65	0.63	0.69	0.68	8,200	0.65
JOMA	1.16	1.11	1.06	1.16	1.11	1.11	1.16	1.15	79,000	1.16
AMAL	1.63	1.56	1.49	1.63	1.60	1.59	1.63	1.62	3,900	1.63
ARSI	0.70	0.67	0.64	0.70	0.70	0.70	0.70	0.70		
IHCO	1.18	1.13	1.08	1.18	1.16	1.16	1.18	1.17	19,670	1.18
IDMC	1.19	1.14	1.09	1.19	1.14	1.11	1.19	1.16	8,091	1.19
BDIN	0.48	0.46	0.44	0.48	0.48	0.47	0.48	0.48	600	0.48
ENTK	1.68	1.61	1.53	1.69	1.55	1.55	1.68	1.62	2,545	1.64
CEBC	0.97	0.93	0.89	0.97	0.95	0.94	0.97	0.96	244,407	0.97
SURA	0.76	0.73	0.70	0.76	0.73	0.73	0.76	0.76	26,000	0.75
IBUM	1.20	1.25	1.18	1.24	1.24	1.24	1.20	1.28	600	1.25

### 1. Market Depth

This shows the best 5 buy and sell orders. This screen has the 'child' option, which indicates if the selected symbol should change when searching for a symbol or not.

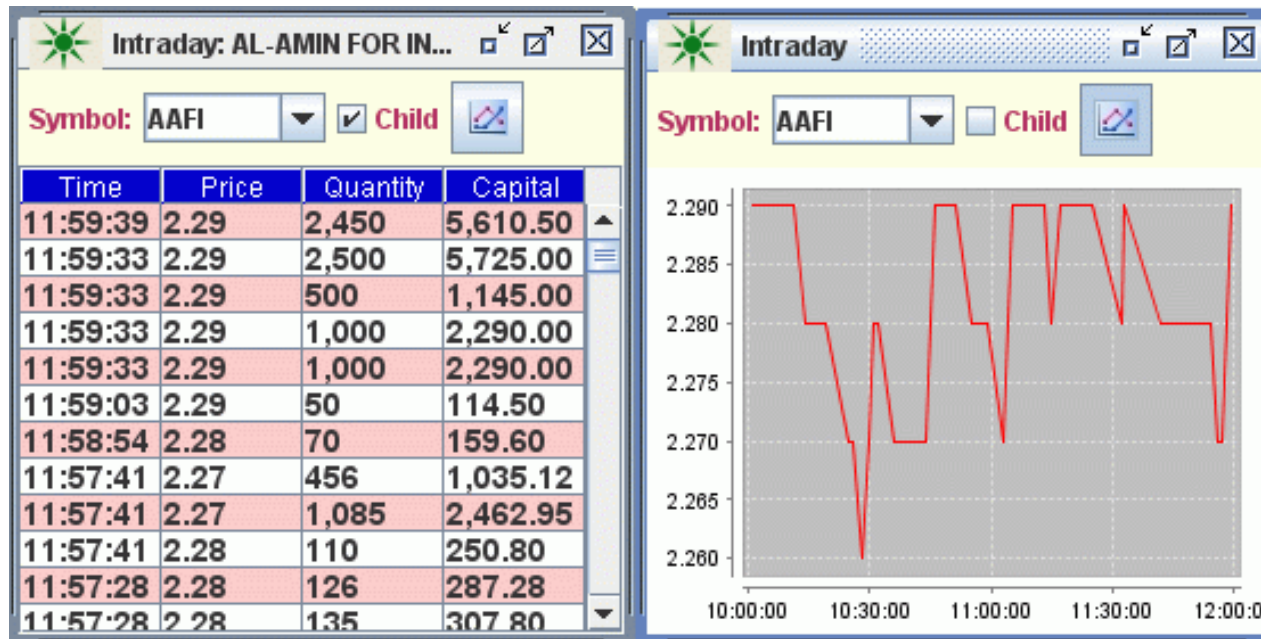


No.	Qty.	Bid	Ask	Qty.	No.
1	2550	2.29	2.3	5000	8
1	5000	2.28	2.31	7590	11
4	12044	2.27	2.32	8700	11
9	18620	2.26	2.33	5550	8
15	14670	2.25	2.34	650	2

-

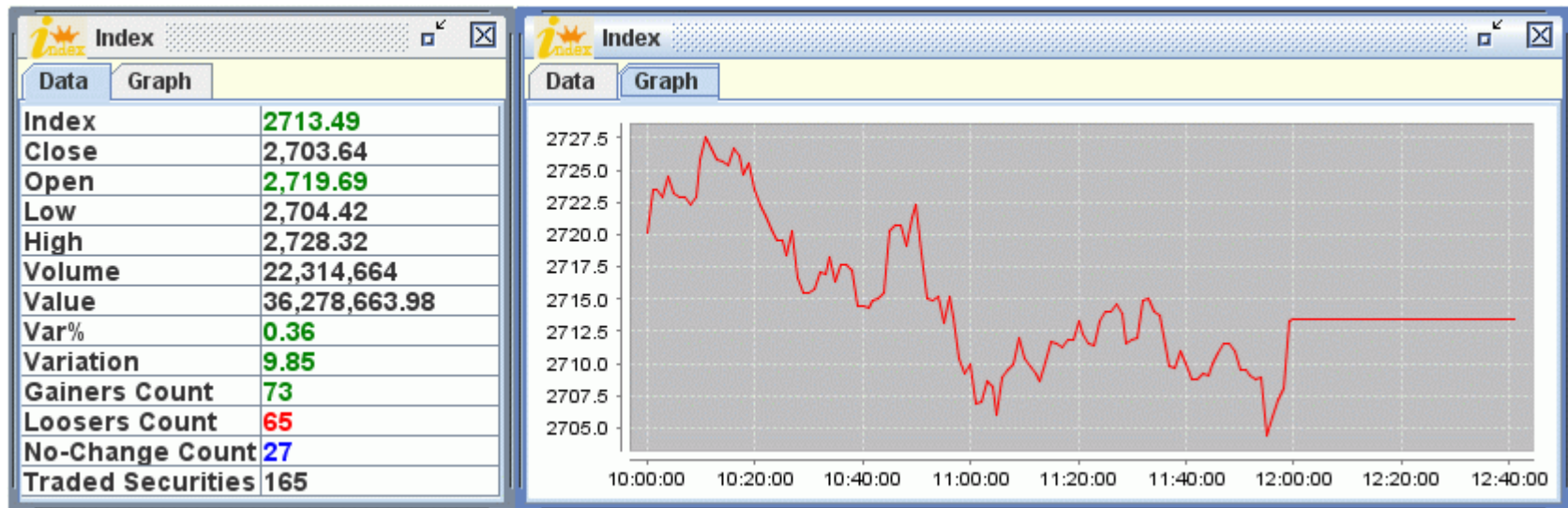
## 2. Intraday

This shows all executed orders for specified company, supported by graphical representation of changes in the stock price during current trading day. This screen has the 'child' option, which indicates if the selected symbol should change when searching for a symbol or not.



### 3. Index

This includes the summary of market performance, supported by a graphical representation of the changes in the index.





#### 4. *Intraday All*

This shows all executed orders for all companies on sequence, in this screen the user can filter data using regular expressions.

Symbol	Price	Volume	Var (%)	Indicator
INVH	1.50	1,550	-0.66	▲
INVH	1.49	300	-1.32	▲
INVH	1.48	200	-1.98	▲
JOST	1.86	1,000	-3.62	
JOPT	5.07	250	-4.87	
JOPT	5.07	250	-4.87	
JNTH	2.10	100	-4.54	▼
RJAL	1.60	200	-1.84	
SPIC	5.80	1,000	-1.86	▼
UNIF	0.83	80	-4.59	▼
JOST	1.86	5,000	-3.62	
AMWL	1.34	100	-3.59	▲
AMWL	1.33	200	-4.31	▼
UGHI	0.77	250	-1.28	
UGHI	0.77	1,000	-1.28	
UGHI	0.77	8,850	-1.28	
FINS	0.93	450	3.33	
FINS	0.93	50	3.33	▲
RJAL	1.60	200	-1.84	
JOST	1.86	10,000	-3.62	

### 5. Best and Least Performers

This includes the best 10 increasing companies according to stock price, trading value and trading volume, it also includes the most 10 decreasing companies according to stock price and trading volume.

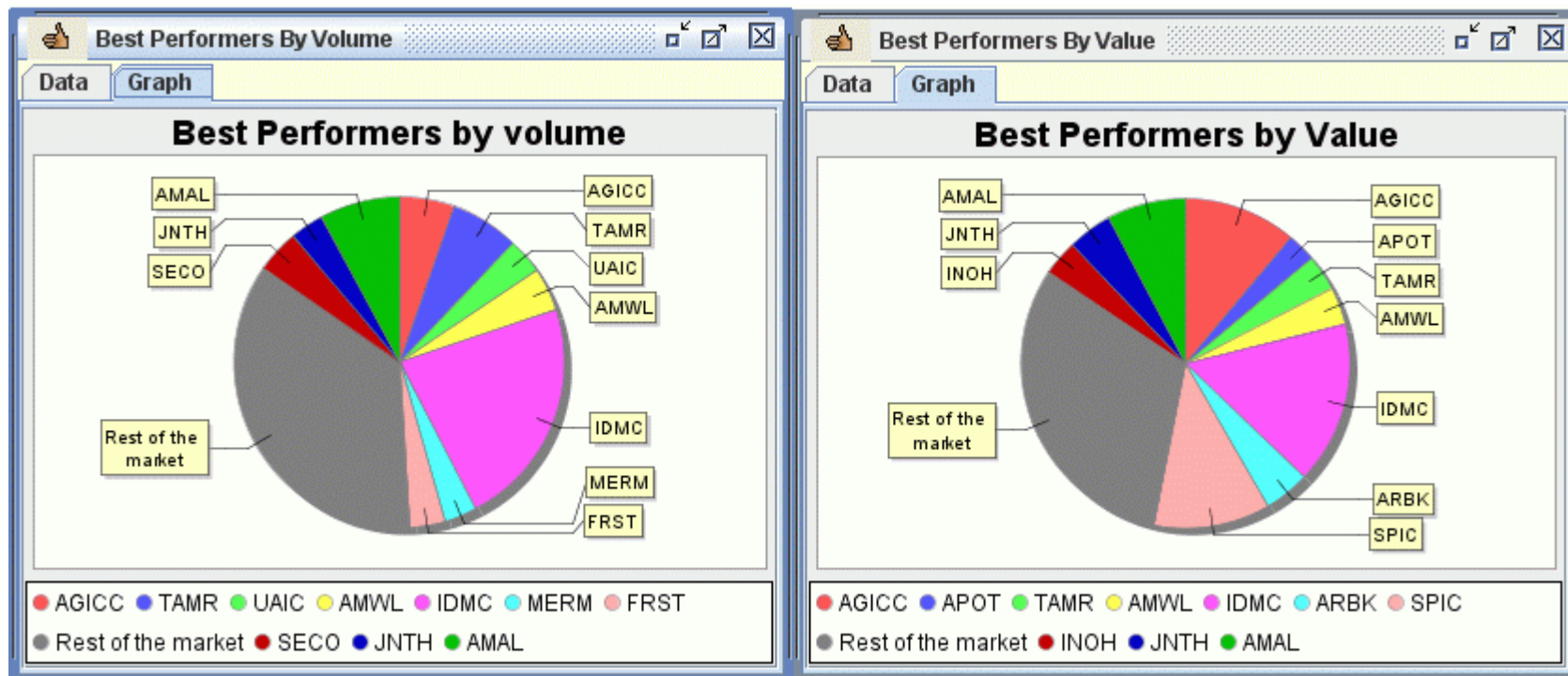
Best Performers By Variance			
Symbol	Name	Last	Var%
FUTR	FUTURE ARA...	0.63	5.00
AIFE	ISRA EDUE ...	2.32	4.97
AGICC	ARAB GERMA...	3.39	4.95
PRES	J.PRESS FOU...	16.53	4.95
ARAI	BARAKAH TA...	2.13	4.92
FRST	FIRST JORDA...	0.44	4.76
JEDI	DIMENSIONS ...	0.88	4.76
JITC	JORDAN INTL ...	3.55	4.71
JOPI	JOR PIPES M...	1.11	4.71
JOGB	JCBANK	2.05	4.59

Best Performers By Volume			
Symbol	Name	Last	Volume
IDMC	AD-DULAYL ...	1.19	5,005,927
AMAL	AL-AMAL INV...	1.63	1,740,059
TAMR	TAAMEER J...	0.82	1,505,391
AGICC	ARAB GERM...	3.39	1,202,065
AMWL	AMWAL INVE...	1.43	948,202
SECO	SOUTH ELEC...	0.47	946,199
UAIC	UNI ARAB IN...	1.04	780,878
FRST	FIRST JORD...	0.44	750,804
JNTH	TAJCATE...	2.16	1,586,868.59
AMWL	AMWAL I...	1.43	1,346,803.65
INOH	COMPRES...	2.59	1,270,683.98
TAMR	TAAMEER	0.82	1,505,391

Best Performers By Value			
Symbol	Name	Last	Value
IDMC	AD-DULA...	1.19	5,819,784.79
SPIC	SPCZ.INV...	5.77	4,125,096.70
AGICC	ARAB GE...	3.39	4,025,514.67
AMAL	AL-AMAL I...	1.63	2,817,886.93
ARBK	ARAB BA...	13.00	1,646,533.35
JNTH	TAJCATE...	2.16	1,586,868.59
AMWL	AMWAL I...	1.43	1,346,803.65
INOH	COMPRES...	2.59	1,270,683.98
TAMR	TAAMEER	0.82	1,505,391

## 6. Best Performers 'graphs'

This is a graphical representation of the best 10 increasing companies, according to trading volume and trading value including the rest of the market.



## 7. Stock Information

This includes outstanding shares for the company, pivot point, resistance point 1, resistance point 2, support point 1, Support point 2 and circulars.

This also includes board of director's trading, major shareholders and changes in company contributors for specified date.

Company info :AAFI

AAFI  Child

Outstanding shares	10,000,000	Close	2.26
Volume	51,693	Low	2.26
Value	117,999.25	High	2.29
Maximum	2.37	PIVOT POI...	2.27
Minimum	2.15	R1	2.28
Last price	2.29	R2	2.30
Variation	0.03	S1	2.25
Variation (%)	1.32	S2	2.24
Open	2.29		

Company info :AAFI

Date: 12-02-2009

**This screen is under test**

Contributors own more than 1%    Members of Board Directors    Contributors Change

Name	Percent	Variation
البنك الاسلامي الاردني للتمويل والاستثمار	33.928	0
ALTAWFEEK COMPANY FOR I...	8.725	0
شركة البركة للاستثمار والتنمية صالح عبدالله ...	3.02	0
شركة التامين الاسلامية	3	0
الشركة العربية لصناعة المواسير المعدنية	2.7	0
الشركة المهنية للاستثمارات العقارية و الإسكان	1.892	0
فتحي حسن رشيد خلف	1.375	-0.095
<b>TOTAL</b>	<b>54.64</b>	<b>-0.095</b>

### 8. *Blocked Trades*

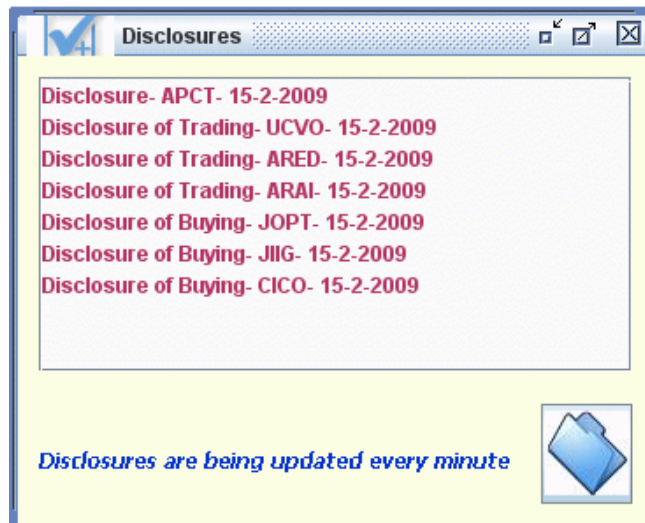
This includes all blocked trades for the current trading day.



Symbol	Time	Price	Quantity	Volume
SPIC	12:03:48	6.03	109,078	657,740.34

### 9. *Disclosures*

This will display all disclosures for a specific listed company; disclosures are updated every 1 minute.

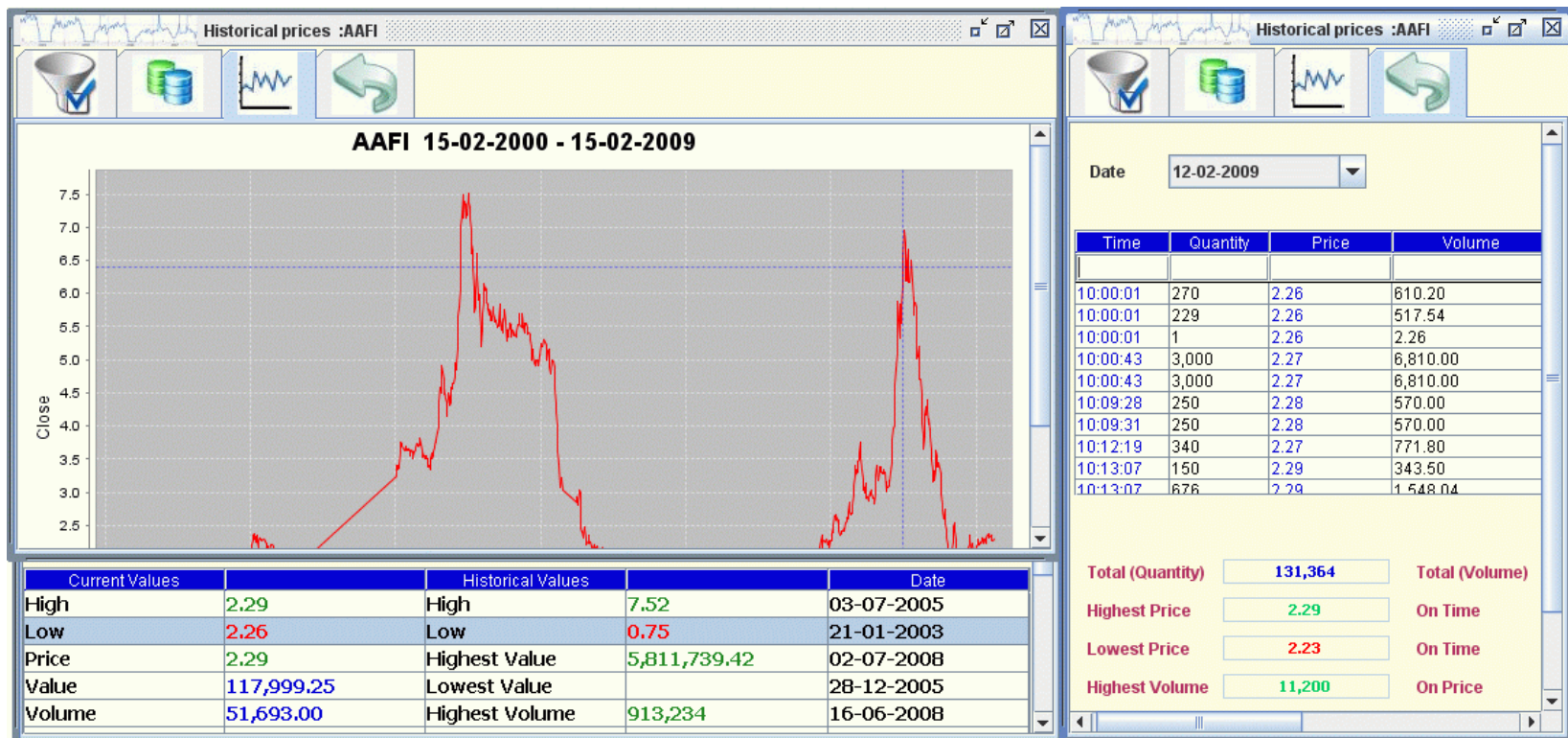


Disclosure- APCT- 15-2-2009
Disclosure of Trading- UCVO- 15-2-2009
Disclosure of Trading- ARED- 15-2-2009
Disclosure of Trading- ARAI- 15-2-2009
Disclosure of Buying- JOPT- 15-2-2009
Disclosure of Buying- JIIG- 15-2-2009
Disclosure of Buying- CICO- 15-2-2009

*Disclosures are being updated every minute*

### 10. Historical Prices

This shows information related to all "trading days" during a specified period of time, a summary of this information, a graph that represent the changes in the stock prices during a selected period of time, and all previous sessions showing the buyer and seller information.



### 11. Bid - Ask Stocks

This shows all stocks with a "Bid" but no "Ask", and those stocks with an "Ask" and no "Bid".

Ask Stocks with ask but no bid					Bid Stocks with bid but no ask				
Symbol	Last	Ask Qty	Ask	Ask Var (...)	Symbol	Last	Bid Qty	Bid	Bid Var (%)
AALI		50	2.53	-2.32	AIFE	2.32	1,860	2.32	4.98
ACDT	3.85	20	3.85	-3.75	AIPC	2.00	500	2.01	0.50
AIFF		1,444	5.02	-4.92	IHCO	1.18	19,670	1.18	4.42
AJFM		5,393	2.88	-4.95	IREL	5.51	193	5.51	
ALFA	1.60	1,860	1.60	-3.03	JMRC		1,000	1.00	
AMMI		10,000	1.69	-0.59	NAAI		300	1.25	
ARDN	1.68	236	1.68	-4.55	NATP		4,463	2.00	



The Arab Financial Investment Co.  
الشركة العربية للاستثمارات المالية

## ***12. Brokers Daily Activity***

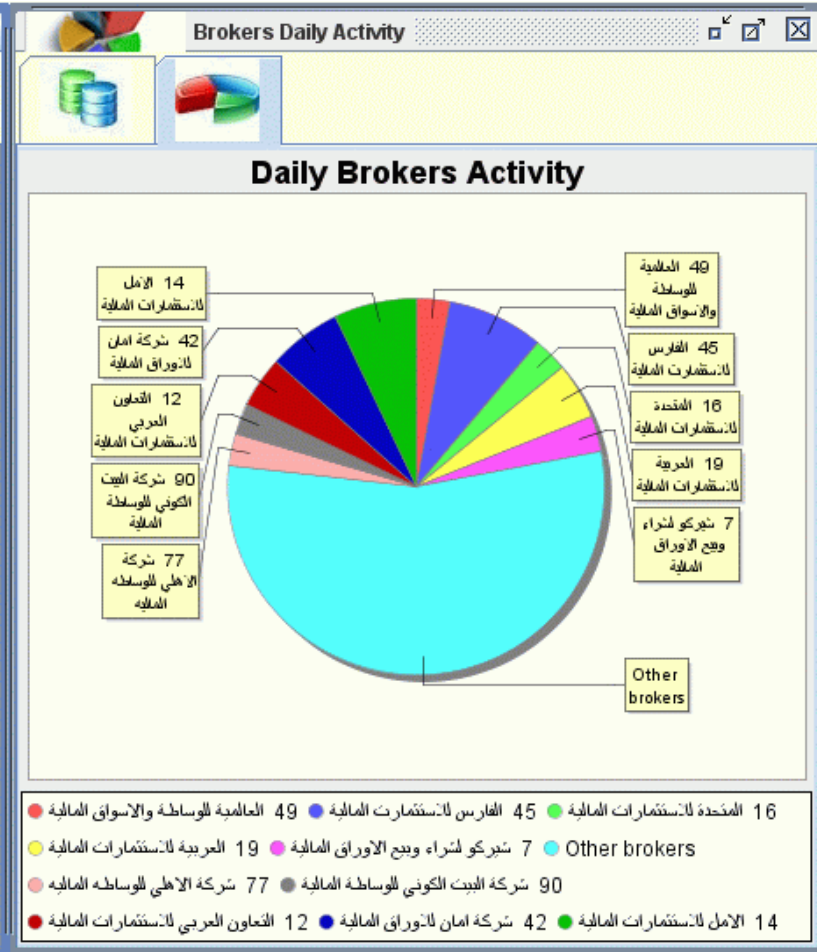
This shows all brokers daily activity for any trading day and a pie chart showing each broker activity percentage of the whole market.



**Brokers Daily Activity**

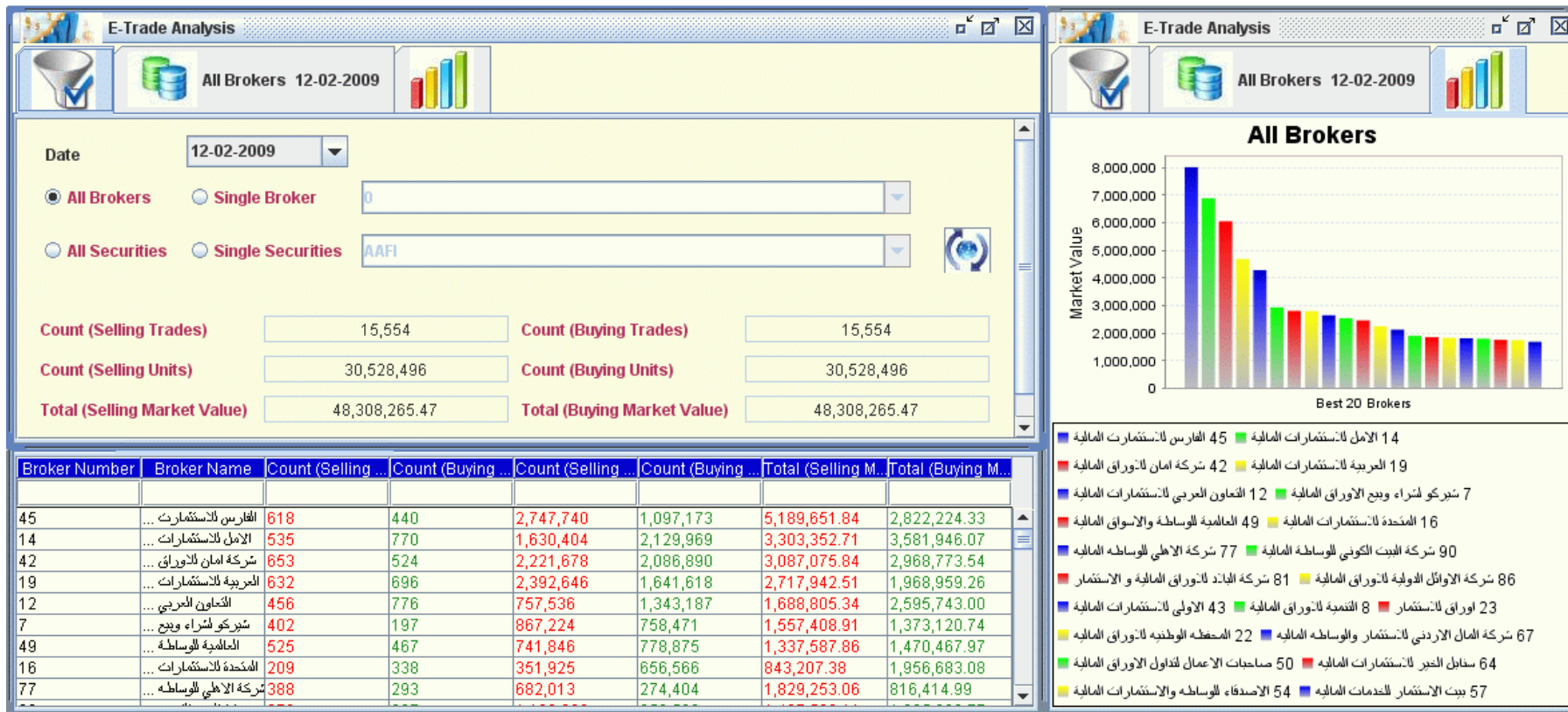
Date: 12-02-2009

Rank	Broker	Selling	Buying	Total
1	45	5,189,651.84	2,822,224.33	8,011,876.17
2	14	3,303,352.71	3,581,946.07	6,885,298.78
3	42	3,087,075.84	2,968,773.54	6,055,849.38
4	19	2,717,942.51	1,968,959.26	4,686,901.77
5	12	1,888,805.34	2,595,743.00	4,284,548.34
6	7	1,557,408.91	1,373,120.74	2,930,529.65
7	49	1,337,587.86	1,470,467.97	2,808,055.83
8	16	843,207.38	1,956,683.08	2,799,890.46
9	77	1,829,253.06	816,414.99	2,645,668.05
10	90	1,437,503.11	1,095,869.77	2,533,372.88
11	81	1,014,876.42	1,448,368.37	2,463,244.79
12	86	957,236.81	1,289,224.00	2,246,460.81
13	43	1,012,041.62	1,115,639.56	2,127,681.18
14	8	591,083.29	1,304,751.71	1,895,835.00
15	23	737,353.68	1,118,247.89	1,855,601.57
16	22	626,564.97	1,201,874.21	1,828,439.18
17	67	922,019.01	892,485.42	1,814,504.43
18	50	722,259.17	859,172.15	1,581,431.32
19	64	904,588.45	859,172.15	1,759,760.60
20	54	756,832.12	988,094.72	1,744,926.84
21	57	846,963.41	837,630.44	1,684,593.85
22	40	692,399.39	826,843.78	1,519,243.17
23	38	511,466.88	889,813.51	1,401,280.39



### 13. E-Trade Analysis

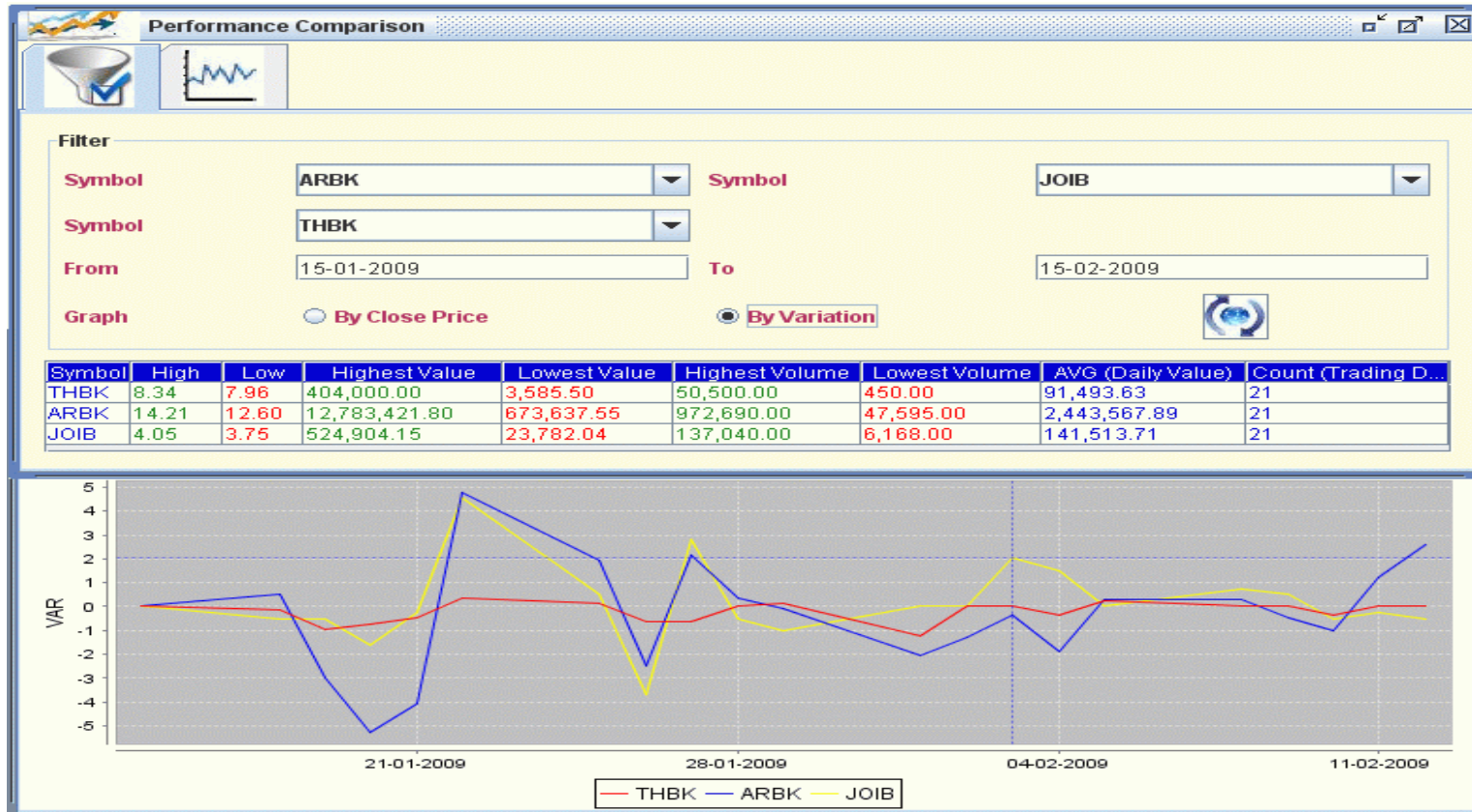
This shows an electronic trade analysis on a specific date according to: all brokers, single broker, all securities or single security.



-

#### ***14. Performace Comparasion***

This compares three chosen securities according to: security close price or security variation. The comparison period must not exceed 6 months.



### 15. Shareholder Contributions

This allows the user to search for a shareholder, shows all securities this shareholder is one of its members of the board directors and all securities this shareholder owns more than 1 %.

Shareholders
⏏ ⏏ ⏏

**Shareholder Name**

**Date** 12-02-2009 Update

ابراهيم عبد الله عبد الحليم ابو خديجه - 2009-02-12

**Contributes In**

Symbol	Percent	Variation
AIFF	3.004	0
AIEI	1.976	0

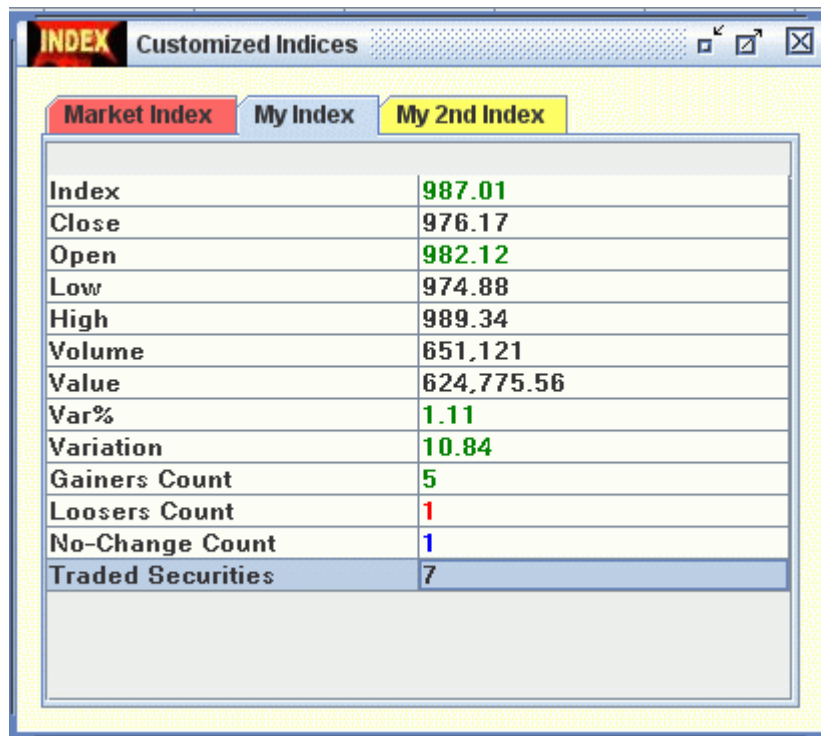
**Members of Board Directors In**

Symbol	Propery	Variation
AIEI	800,276	0
AIFF	315,400	0
ITSC	35,727	-40,300

#	Name	Nation...
1	DEL MONTE FRESH PR...	جزر كايمان
2	THE CONGRESS FOUN...	البحرين
3	ابراهيم عبد الله عبد الحليم ابو خديجه	الأردنية
4	ابراهيم محمد محمد عوض	الأردنية
5	احمد ابراهيم طاهر الداود	الأردنية
6	احمد طاهر محمد الجعبر	الأردنية
7	اسامه درويش مصطفى الخليلي	الأردنية
8	افنان ابراهيم طاهر الداود	الأردنية
9	اكرم فرج هرمز كريم	العراقية

### 16. Customized Indices

This allows the user to choose a set of symbols to create his own index. Infinite number of indices can be created in this screen.



INDEX Customized Indices	
Market Index    My Index    My 2nd Index	
Index	987.01
Close	976.17
Open	982.12
Low	974.88
High	989.34
Volume	651,121
Value	624,775.56
Var%	1.11
Variation	10.84
Gainers Count	5
Losers Count	1
No-Change Count	1
Traded Securities	7

### 17. Ticker

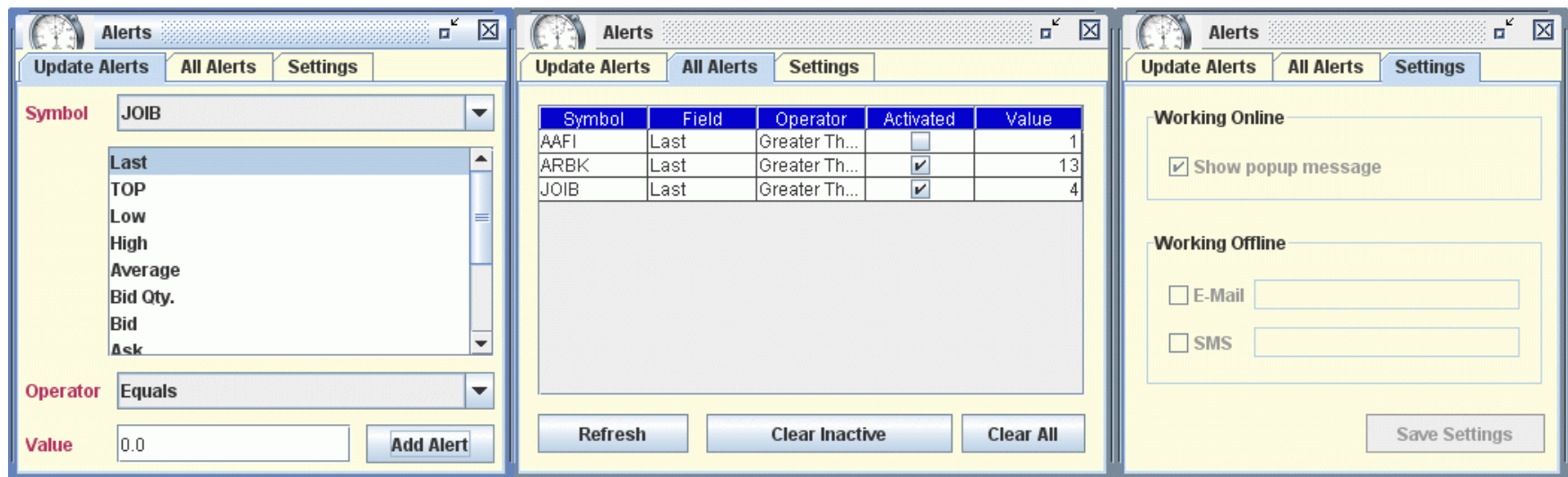
Market ticker.

4.84%	300.20K	ARBK 12.45 -1.81% 1.04M	ARDN 1.61 4.54% 322.00	ARED 1.97 -1.0% 111.31K	ASPMM 2.4 1.26% 240.00	ATTA 0.73 4.28% 30.22K
-------	---------	-------------------------	------------------------	-------------------------	------------------------	------------------------

-

### 18. Alerts

This allows the user to define an alert and link it to a selected "Stock" for a specific condition regarding any field. Alerts can also be set through SMS, e-mail or a message during the trading session.



The screenshot displays three panels of the Alerts application interface:

- Left Panel (Configuration):** Shows the 'Update Alerts' tab. The 'Symbol' dropdown is set to 'JOIB'. The 'Field' dropdown is set to 'Last'. The 'Operator' dropdown is set to 'Equals'. The 'Value' input field contains '0.0'. An 'Add Alert' button is visible at the bottom right.
- Middle Panel (Active Alerts):** Shows the 'All Alerts' tab with a table of active alerts:
 

Symbol	Field	Operator	Activated	Value
AAFI	Last	Greater Th...	<input type="checkbox"/>	1
ARBK	Last	Greater Th...	<input checked="" type="checkbox"/>	13
JOIB	Last	Greater Th...	<input checked="" type="checkbox"/>	4

 Below the table are buttons for 'Refresh', 'Clear Inactive', and 'Clear All'.
- Right Panel (Notification Settings):** Shows the 'Settings' tab. It has two sections:
  - Working Online:** Includes a checkbox for 'Show popup message' which is checked.
  - Working Offline:** Includes checkboxes for 'E-Mail' and 'SMS', each followed by an empty input field.
 A 'Save Settings' button is located at the bottom right.

## Online Trading

### 1. *Multi - Account Portfolio*

This is a major function, it shows account information and portfolio details; for normal accounts, information includes the account type, name, balance, market value, credit limit, reserved cash, available cash, profit (loss) of zero balance stocks, profit (loss) of non zero balance stocks and the total profit (loss).

In the case of margin accounts, all additional information's' will be shown, such as client equity, client share percentage, withdrawal power, purchasing power, required deposit and required selling.

Portfolio details include the symbol, stock name, balance, average unit cost, last price, pledge, lien, realized profit (loss), total cost, unrealized profit (loss) and market value. A graph is included in this screen to show the total cost for each stock.

Portfolio fields can be shown or hidden, and can reordered depending on what does the user prefer.





**Portfolio - Account #4001**

Account ID: 4001 Account Type: عادي مستقل

Name:

Online

Balance: 91,753.64 JOD  
Total (Market Value): 1,835,524.99 JOD  
Credit Limit: 0 JOD

Reserved Cash: 0 JOD Portfolio Net Value: 1,927,278.63 JOD Available Cash: 91,753.64 JOD  
Zero Shares PL.R: 146,482.53 JOD Non-Zero Shares PL.R: 226,919.209 JOD Total (PL.R): 373,401.739 JOD

Portfolio Risk Factor Graph

Symbol	Balance	Avg. Cost	Total Cost	Last Price	Market Value	P/L UR.	P/L UR. (%)	P/L R.
JNTH	264,000	1.38	363,448.41	2.27	599,280.00	232,595.48	0.64	225,208.97
PRED	175,047	2.67	467,421.29	2.39	418,362.33	-51,318.12	-0.11	
FRST	1,015,4...	0.49	501,469.17	0.48	487,392.00	-16,709.08	-0.03	70.70
FOOD	249,050	0.72	179,805.08	0.71	176,825.50	-3,934.44	-0.02	82.72
LIPO	42,900	2.16	92,531.99	2.11	90,519.00	-2,501.79	-0.03	
MECE	41,272	1.77	73,246.95	1.53	63,146.16	-10,441.78	-0.14	1.4
6			1,677,922.89		1,835,524.99	147,690.27	0.09	22

MODEL RESTAURANTS			
Open : 0.71	Variation : 0.0		
High : 0.72	Var (%) : 0.0		
Low : 0.7	Volume : 24210		
Avg : 0.71	Value : 17184.11		
BidQty	Bid	AskQty	Ask
3000	0.7	4349	0.71



**\* Portfolio Loss Risk**

*No Risk*

**\* Securities Loss Risk**

<i>PRED</i>	<i>Medium Risk</i>	<i>-0.11</i>
<i>FRST</i>	<i>Low Risk</i>	<i>-0.03</i>
<i>FOOD</i>	<i>Low Risk</i>	<i>-0.02</i>
<i>LIPO</i>	<i>Low Risk</i>	<i>-0.03</i>
<i>MECE</i>	<i>High Risk</i>	<i>-0.14</i>

**\* Security Investment Risk**

<i>JNTH</i>	<i>High Risk</i>	<i>0.22</i>
<i>PRED</i>	<i>High Risk</i>	<i>0.28</i>
<i>FRST</i>	<i>High Risk</i>	<i>0.3</i>
<i>FOOD</i>	<i>Medium Risk</i>	<i>0.11</i>

-

### Statement of Account

This shows all transactions for selected account in a specific period.

Statement of Account										
<b>Account</b>		18								
<b>From Date</b>		01-01-2007			<b>To Date</b>		15-02-2007			<b>Update</b>
<b>Name</b>										
<b>Open Balance</b>		8,018.127			<b>Count (Transactions)</b>		23			
<b>Total (Credit)</b>		308,941.535			<b>Total (Debit)</b>		326,240.85			
Duration: 01-01-2007 - 15-02-2007 Account #: 18										
Date	Transact.	Value D...	Ref. No	Symbol	No. of S...	Avg. Cost	Credit	Debit	Balance	Status
14-01-2...	ايداع	14-01-2...	100	\$			-5431.6...		162955....	
14-01-2...	ايداع	14-01-2...	101	\$			-98174....		64781.5...	
14-01-2...	ايداع	14-01-2...	102	\$			-23204....		41576.8...	
10-01-2...	سحب/شيك	10-01-2...	95	\$				33558.7...	8018.127	1
23-01-2...	شراء	23-01-2...	10715B	CEIG	2,500	1.640		4122.140	3895.987	C
30-01-2...	شراء	30-01-2...	11187B	PRES	827	11.800		9811.295	-5915.3...	C
31-01-2...	شراء	31-01-2...	11298B	ABMS	7,255	1.891		13791.5...	-19706....	C
31-01-2...	شراء	31-01-2...	11299B	PRES	7,245	12.168		88629.7...	-108336...	C
31-01-2...	شراء	31-01-2...	11300B	ACDT	5,000	13.900		69872.7	-178209	C

## 2. *New Order Placement*

When placing a new buy or sell order; the system will check and validate the "Qty" of stocks can be traded, and "Price" to be between the limit up and down.

Sell orders will be subject to validation on the level of "Qty" which must be available in the portfolio, "buy orders" will be subject to validation on the level of "Cash" balance.

Support and resistance, and portfolio information are available to help making order placement decision.



Order					
Account	4001	Security No.	131239	Symbol	TAMR
Commission (%)	0.0054	Quantity	1000	Price	0.86
Commission	4.64	Net Value	855.36	Amount	860
<input checked="" type="checkbox"/> Show Support and Resistance	<input checked="" type="checkbox"/> Show Portfolio Info.	<input type="button" value="Cancel"/> <input type="button" value="Send"/>			
Support and Resistance					
Pivot Point	0.84	R1	0.84	R2	0.87
S1	0.81	S2	0.81		
Portfolio Info					
No. Stocks	236,000	Avg. Cost	0.76	Total Cost	178,767.69
Market Value	202,960	Balance	1,193.73	P/L R.	0
P/L UR.	23,096.33				

Order					
Account	4001	Security No.	113023	Symbol	ARBK
Commission (%)	0.0054	Quantity	30	Price	12.35
Commission	2	Net Value	372.5	Amount	370.5
<input checked="" type="checkbox"/> Show Support and Resistance	<input checked="" type="checkbox"/> Show Portfolio Info.	<input type="button" value="Cancel"/> <input type="button" value="Send"/>			
Support and Resistance					
Pivot Point	12.97	R1	13.09	R2	13.18
S1	12.88	S2	12.76		
Portfolio Info					
No. Stocks	0	Avg. Cost	0	Total Cost	0
Market Value	0	Balance	1,193.73	P/L R.	0
P/L UR.	0				

### 3. *Orders Book and Orders History*

The "Orders book" will show all orders requested (buy, sell, cancel and replace orders) during the current trading day, and the "Orders History" will show all the "Old orders". Information includes the order id, type (side), time, account id, symbol, security id, quantity, price, executed quantity, executed price, status, commission percentage, value, and commission, addition to the net value, executed value, executed commission and the executed net value.

Orders summary and orders status are available in this screen, this includes the total amounts of commission, value, net value, executed commission, executed value and executed net value. Replacing and cancelling orders can be done through orders book.



**Orders**

Order ID	Type	Account ID	Symbol	Security ID	Quantity	Price	Executed Quantity	Executed Price	Status	Commission (%)	Value	Commission	Net Value	E \
1	BUY	1,350	PRES	131013	15	16.80			NEW	0.07	252.00	16.88	268.88	
2	BUY	1,350	PRES	131013	15	16.60			NEW	0.07	249.00	16.68	265.68	
3	SELL	1,350	RJAL	RJAL	30	3.60			NEW	0.07	108.00	7.24	100.76	
4	SELL	1,350	RJAL	RJAL	10	3.60			NEW	0.07	36.00	2.41	33.59	
5	SELL	1,350	RJAL	RJAL	20	3.60			NEW	0.07	72.00	4.82	67.18	
6	BUY	1,350	SPEC	SPEC	5	4.60			NEW	0.07	23.00	1.54	24.54	
7	BUY	1,350	SPEC	SPEC	10	4.60			NEW	0.07	46.00	3.08	49.08	
8	BUY	1,350	SPEC	SPEC	15	4.60			NEW	0.07	69.00	4.62	73.62	

Orders Summary

Total (Commission)	57.29
Total (Value)	855
Total (Net Value)	883.34
Total (Executed Commission)	0
Total (Executed Value)	0
Total (Executed Net Value)	0

Orders status

New	8	Pend	0
replace	0	Pending	0
Cancel	0	Pending	0
		Rejected	0

Selected 1 Orders of 8

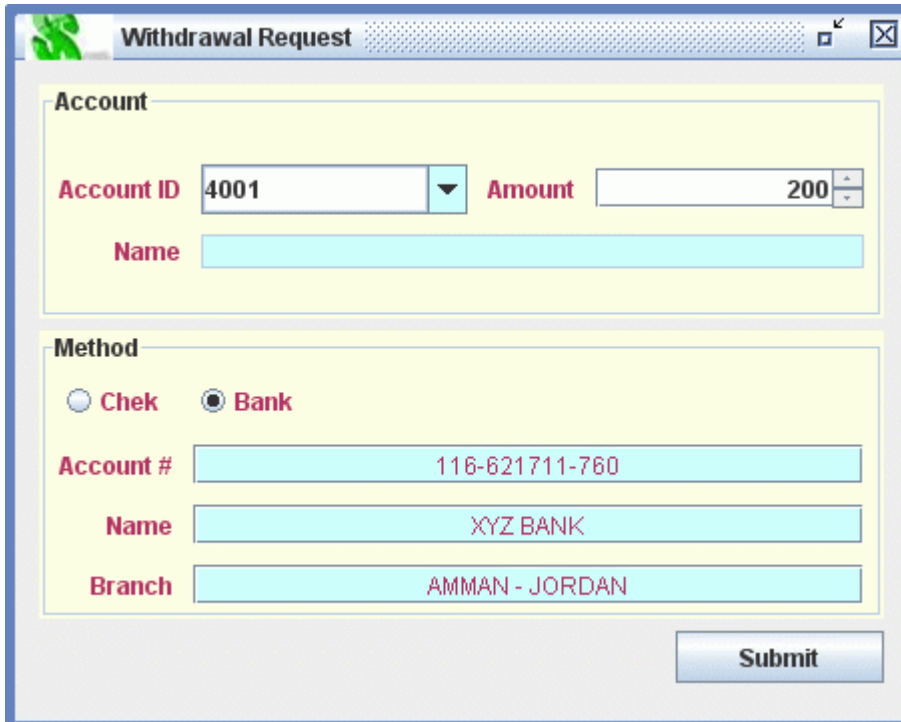
**J.PRESS FOUNDAT**

Open : 13.2	Variation : 0.2
High : 14.1	Var (%) : 1.47
Low : 13.2	Volume : 15176
Avg : 13.64	Value : 206976.76

BidQty	Bid	AskQty	Ask
712	13.75	1000	14.0

#### 4. *Withdrawal Request*

The “Withdrawal Request “will send a withdrawal request to the brokerage company; the withdrawal operation can be done by transferring money to bank account or through processing a check.



**Withdrawal Request**

**Account**

Account ID: 4001    Amount: 200

Name: \_\_\_\_\_

**Method**

Chek     Bank

Account #: 116-621711-760

Name: XYZ BANK

Branch: AMMAN - JORDAN

**Submit**